

# RAIL BEARING CLEANING PLANT



We offer Complete Rail Bearing cleaning plant with aqueous based cleaning Technologies for Rail roller Bearings / Cartridge Roller Bearing (CTRB) to remove grease, muck & dirt etc. from the used bearing in the periodical overhauling maintenance, (POH) of Rail Rolling Stock.



**ULTRAMAX HYDROJET PVT. LTD.**

## TECHNICAL FEATURES OF MACHINE

- Automatic complete cleaning of CTRB & Roller Bearings
- Standard washing solution recycling process followed by fresh water rinse (or) Recirculated rinse with Rust inhibitor & Hot Air blowing
- Front Loading Batch Type Machine for easy loading & unloading
- Auto Door open & close system for washing cabinet
- Auto slip clutch provided for turntable drive system
- Automatic Tank wash solution level control system is provided
- Tank heating with Electrical heaters
- All safety interlocks has been provided
- Automatic sludge removal system to remove the sludge accumulating in the wash tanks regularly which increases the tank cleanout extended life
- Construction of Wash tanks & spray cabinet with corrosion resistance Stainless Steel (SS 304)

## STANDARD ACCESSORIES OF MACHINE

- Waste solution Treatment processor
- Automatic Sludge Removal system
- Water softening plant
- Servo Voltage Stabilizer
- Ultra Isolation Transformer
- Bearing Holding fixtures
- Bearing Loading & unloading Jib hoist

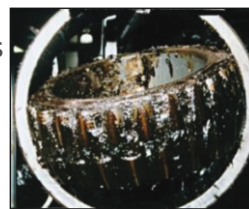
## MACHINE USABLE CAPACITY

- Turntable Diameter : 1200 mm
- Working height : 900 mm
- Turntable capacity : 500 Kgs to 1500 Kgs (Max)
- Type of bearings : CTRB, Roller, Sealed Deep groove
- Individual Weight of bearings : 30 Kgs to 45 Kgs (Max)
- Max Diameter of Table : 1500 mm

## SOLUTION TANKS & ITS FEATURES

- Wash Tank Capacity : 1000 Ltrs
- Wash Tank Operating Temperature : 65°C - 75°C
- Initial Heat up time for Wash Tank : 90 to 120 Mins
- Electrical heating capacity for Wash Tank : 75 Kw
- PH of the solution to be maintained : 10 -11

**BEFORE CLEANING**



**AFTER CLEANING**



## PUMPING & SPRAY MANIFOLD FEATURES

- Spray Manifold : High impact oscillating Type
- No of Nozzles for Spray Wash: 26 No's
- No of Nozzles for Rinse : 8 No's
- Type of Nozzle : V Jet, High Impact stainless steel
- Pump Type : Vertical Mounting Centrifugal Type
- Wash Pump capacity : 7- 8 bar @ 700-750 LPM

**BEFORE CLEANING**



**AFTER CLEANING**



## ULTRAMAX HYDROJET PVT. LTD.

AN ISO 9001:2015 COMPANY

AC-31/4A, 6th Main Road, SIDCO  
Industrial Estate, Thirumudivakkam,  
Chennai - 600 044, Tamil Nadu. India.

Phone : +91 44 4285 2262 / 2264

Mobile : +91 8903335096 / +91 94441 30593

Email : [marketing@hydrojet.co.in](mailto:marketing@hydrojet.co.in)

Web : [www.hydrojet.co.in](http://www.hydrojet.co.in)

